

Hello Friend, take a journey to the authentic self. [View Online](#) Or [Forward](#) to a friend.



A Great Dive

Four nights only! August 13 - August 16

Written & performed by Puja Mohindra

Directed by Andrew Volkoff



What would you risk for love? Geeta Gidwani is a young, Indian American woman caught between conflicting notions of Eastern and Western love. She rejects the idea of arranged marriage. Geeta wants to fall madly in love like she's seen in Bollywood movies and on TV; so when she meets Manish, she is eager to start a fairytale adventure with her soulmate. Geeta's father has just one rule when it comes to love: "Don't bring him home unless you're going to get married."

PERFORMANCE SCHEDULE

Thursday, August 13, 2015 at 7:30 PM

Friday, August 14, 2015 at 8:00 PM

Saturday, August 15, 2015 at 4:00 PM

Sunday, August 16, 2015 at 4:00 PM

TICKETS

Tickets are only \$15 (\$12 for students)

[Buy Tickets](#)

Buy Tickets Online. No processing fees.

VENUE

Pierce Hall

The Historic Chicago Temple Building

77 W Washington St, Lower Level

Chicago, IL 60602

PARKING

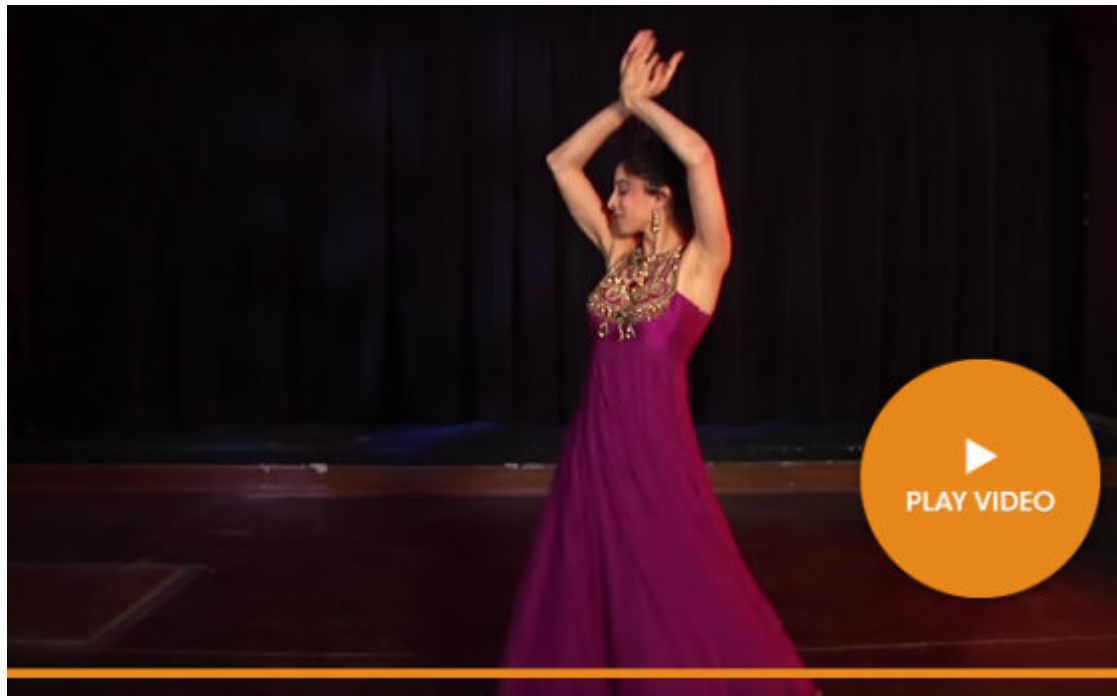
We are easily accessible from all major transportation including Metra, CTA, and RTA. If you plan to drive, take advantage of our \$8 parking arrangement at Self Park, 230 W Washington St (corner of Washington & Franklin, building with Cosi restaurant). Ask box office attendant for discount coupon.

Journey to the Authentic Self



Regardless of our backgrounds, love is something we all desire. Puja Mohindra's *A Great Dive* explores love and Geeta's romantic journey. "It is about acceptance as willingness to experience life fully," says Puja. "It takes a lot of courage to be your most authentic self. And if we can do that, then we actually have a shot at love." [Read more](#) about Puja Mohindra and her upcoming solo play *A Great Dive* in this [Chicago Tribune Community article >>](#)

Dramatization Through Dance



Multi-talented writer and actor Puja Mohindra has a background in dance. She danced and traveled with Natya Dance Theatre. *A Great Dive* pays homage to her training in Bharata Natyam, an Indian classical dance style, by dramatizing through abhinaya, an element of all traditional Indian dance. Abhinaya calls for the dancer to guide the audience toward feeling using facial expressions, body movement and hand gestures to express emotion and thought. Love and dance go hand-in-hand: they both involve emotions that move beyond the dimension of words. [Watch](#) Puja perform a dance sequence [here >>](#)

Our neighborhood partners provide generous support to Silk Road Rising throughout the year. Please help us show our appreciation by patronizing these outstanding businesses.



Let's Stay Connected:



You are receiving this email because you are a Silk Road Rising supporter.

[Unsubscribe](#) | [Update your profile](#) | [Forward to a friend](#)

Copyright © 2015 All rights reserved.

Silk Road Rising 150 N Michigan Ave Ste 1970 Chicago, IL 60601 USA