

Hello Friend, take A Great Dive in the name of love! [View Online](#) Or [Forward](#) to a friend.



A Great Dive

This Week Only! Aug 13 - Aug 16

Written & performed by Puja Mohindra

Directed by Andrew Volkoff - Choreographed by Monica Kapoor

What would *you* risk for romance? Geeta Gidwani, a young, Indian American woman, finds herself caught between conflicting notions of Eastern and Western love. She rejects the idea of arranged marriage. Instead, she wants to fall madly in love like she's seen in Bollywood movies and on TV. So when Geeta meets Manish, she is eager to start a fairytale adventure with her soulmate. Geeta's father has just one thing to say about the matter: "Don't bring him home unless you're going to get married."

PERFORMANCE SCHEDULE

Thursday, August 13, 2015 at 7:30

PM **SOLD OUT!**

Friday, August 14, 2015 at 8:00 PM

Saturday, August 15, 2015 at 4:00 PM

Sunday, August 16, 2015 at 4:00 PM

LIMITED AVAILABILITY!

TICKETS

Tickets are only \$15 (\$12 for students)



[Click to Buy Tickets Online. No processing fees.](#)

VENUE

Pierce Hall

The Historic Chicago Temple Building

77 W Washington St, Lower Level

Chicago, IL 60602

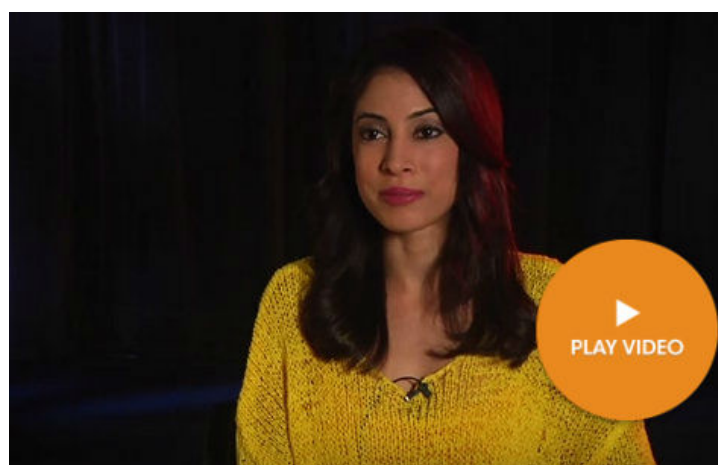
PARKING

We are easily accessible via all major public transportation including Metra, CTA, and RTA. If you plan to drive, take advantage of our \$8 parking arrangement at Self Park, 230 W. Washington St (corner of Washington & Franklin, building with the Cosi restaurant). Ask box office attendant for discount coupon.



Meet A Great Dive Playwright and Actor, Puja Mohindra

What is at the heart of *A Great Dive*? Playwright and actor Puja Mohindra reflects: "My parents were raised to turn marriage into love, and I was raised to turn love into marriage." However, a problem persists. "Nobody gets an education on love and relationships," Puja points out. "There's no training guide or manual and yet that is a huge component of our lives." So how do we learn? Puja's solo play *A Great Dive* is an exploration of love and the journey it takes us on. As she puts it, "I really hope it



[Subscribe](#)

[Past Issues](#)

[Translate](#) ▼

[RSS](#)

Road Solo, [A Great Dive >>](#)

Our neighborhood partners provide generous support to Silk Road Rising throughout the year. Please help us show our appreciation by patronizing these outstanding businesses.



Let's Stay Connected:



You are receiving this email because you are a Silk Road Rising supporter.

[Unsubscribe](#) | [Update your profile](#) | [Forward to a friend](#)

Copyright © 2015 All rights reserved.

Silk Road Rising 150 N Michigan Ave Ste 1970 Chicago, IL 60601 USA