

Hello &&First Name>>, Join us this weekend for a staged reading of *Rumi: Love, Madness & Ecstasy*.
[View Online](#) Or [Forward](#) to a friend.



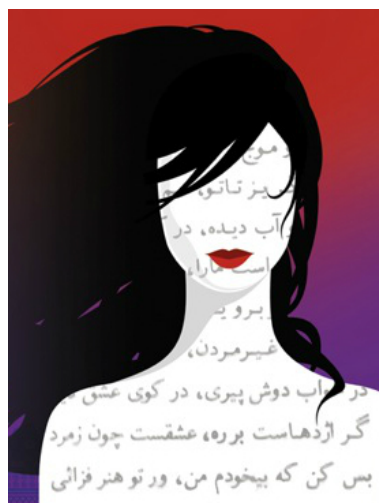
From the Desk of Founding Artistic Director Jamil Khoury



For years I associated the 13th century Persian Sufi poet Jalāl ad-Dīn Muhammad Rūmī with a vision of Islam that is deeply spiritual and esoteric. That association remains very much intact, but it has entered new realms. As a theatre producer, I have come to know some remarkably talented artists who draw courage and wisdom from Rumi's poetry. One such artist is writer, dramatist, and performer Sheri Winkelmann.

Sheri is my friend. She is a friend who inspires and never ceases to amaze. Sheri understands that aligning one's voice with one's deepest truths is the fountainhead of great art. *Rumi: Love, Madness & Ecstasy* is her first play. It is a play that demonstrates extraordinary bravery and exquisite lyricism. Love, betrayal, and renewal form the narrative arc of a play that promises to touch all who've experienced, or are experiencing, the heartbreak of violent deception. Like Rumi's poems, Sheri's play resonates wisdom and hope. She is an artist we all need to know.

A Staged Reading of *Rumi: Love, Madness & Ecstasy* THIS WEEKEND ONLY!



ABOUT THE PLAY

When Sadia travels to India to volunteer with the exiled Tibetan refugee community, she never imagines that she would meet the love of her life. Caught in a whirlwind romance, her new love moves to America and they quickly marry. Not long after the wedding, Sadia discovers a dark, twisted side to him that eventually threatens her life. Struggling to escape the physical and psychological violence that has become her daily life, she connects to the one voice that can lead her to freedom, the Sufi poet Rumi.

Featuring: Joseph Anthony Foronda*, John Francisco*, Emjoy Gavino*, Suzanne Sole*, Michelle Weissgerber*, Gordon Chow, Molly Lyons, Virginia Lee Marie Martinez, Amira Sabbagh and Dwight Sora.

*Member of Actors' Equity Association, the union of professional actors and stage managers in the United States.

VENUE

Performances held at Pierce Hall at The Historic Chicago Temple Building, 77 W Washington St, Chicago

DATES

Friday, February 7 at 8pm
 Saturday, February 8 at 4pm
 Sunday, February 9 at 4pm

TICKETS

Tickets are \$10 each. Tickets can be purchased [online](#) or by calling (312) 857-1234 x201.

[Buy Tickets](#)

PARKING & TRANSPORTATION

We are easily accessible by major RTA and CTA routes. If driving, take advantage of our \$8 parking arrangement with Self Park, 230 W Washington St (building with Cosi restaurant).


Meet Playwright Sheri Winkelmann

[Sheri Winkelmann](#) is an award winning actress, choreographer and director. She has performed Off-Broadway, in regional theaters, internationally, and in independent film and TV. After graduation from DePaul Theater School, she studied the classics intensively with Tony winner Randall Duk Kim, The Globe Theater in London, and Shakespeare and Co, in MA. Sheri has traveled extensively

Fascinated with the relationship between art, ritual, and transformation, she sees theater as a great vehicle to inspire deep, soulful awakening. She is passionate about elevating the status of women, and has created www.rumitheplay.com to connect with artists, activists, and global visionaries.



Muslim Journeys: The Poetry of Rumi



Sunday, April 6th at 3 pm
 Evanston Public Library
 Main Library
 1703 Orrington Ave
 3rd floor Seminar Room

Jalal al-Din Rūmī (1207–73), popularly known simply as Rūmī, was the greatest Sufi mystic and poet in the Persian language, famous for his lyrics and for his epic *Masnavi-yi Ma'navi* which widely influenced mystical thought and literature throughout the Muslim world.

Professor [Carol LaHurd](#) of the Lutheran School of Theology leads a discussion of this remarkable work, exploring its theological and lyric content and influence.

Register [online](#) or by calling 847-448-8620. Copies of *A Rumi Anthology* will be available.

This special presentation is part of the *Muslim Journeys* program and discussion series at Evanston, Morton Grove and Wilmette public libraries. Learn more about the series by visiting the Muslim Journey's [BLOG](#).

Our neighborhood partners provide generous support to Silk Road Rising throughout the year. Please help us show our appreciation by patronizing these outstanding businesses.



Thank you for attending a play or a staged reading at Silk Road Rising. In purchasing tickets, you opted in to receive communication from us.

[Unsubscribe](#) | [Update your profile](#) | [Forward to a friend](#)
 Copyright © 2014 All rights reserved.

Silk Road Rising
 6 E Monroe St
 # 801
 Chicago, IL 60603

[Add us to your address book](#)