

Hello Friend, the body has a memory. [View Online](#) Or [Forward](#) to a friend.



## Oh My Sweet Land January 30-31, 2016

Written by Amir Nizar Zuabi - Conceived by Corinne Jaber

Performed by Amy J. Carle - Directed by Anna C. Bahow



*They call it a civil war  
but there is nothing civil about it  
nothing civil at all.*

They came from Damascus, from Aleppo, from Baniyas, where the bombs fall day and night and the wounded children look like sleeping angels. Now they live in camps and abandoned buildings in Lebanon and Jordan, amongst other places, as Syria becomes a haunting memory.

A Syrian woman prepares kibbeh in her kitchen, while recounting tales of her vanished lover. Her stories bring to life an ancient land torn apart by a cruel war. *Oh My Sweet Land* is written by Amir Nizar Zuabi, rising star of the Palestinian theatre.

This program is proudly associated with the Karam Foundation.



### DATES

Saturday January 30, 2016 at 4 pm

Sunday January 31, 2016 at 4 pm

### TICKETS

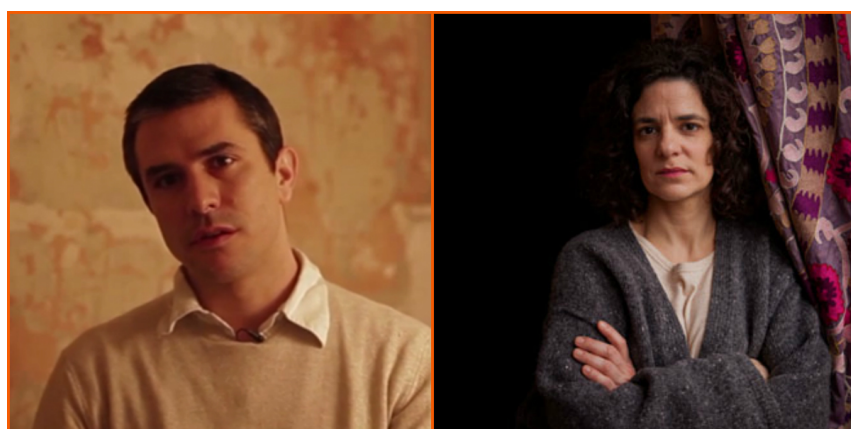
\$10



[Click to Buy Tickets Online](#)

Or call (312) 857-1234 ext. 201.

## Oh My Sweet Land Appeals to the Senses



*Oh My Sweet Land* was conceived of and originally performed by Syrian German actor [Corinne Jaber](#). Growing up, what Jaber knew about Syria she knew through the tastes and smells of her father's cooking. A

[Subscribe](#)[Past Issues](#)[Translate ▼](#)[RSS](#)

where she recorded stories of refugees. Through a friend, Jaber met playwright and director [Amir Nizar Zuabi](#), and together they created *Oh My Sweet Land*. The play has been staged around the world and has been exceedingly well received. Watch an interview with Corinne Jaber and read a review of *Oh My Sweet Land* [HERE >>](#)

## Join Us For Post-Show Talkbacks

*My fingers know what to do. My hands work as if they belong to someone else. The body has a memory.*

*Oh My Sweet Land* is not the story of one Syrian woman but the urgent and heartbreaking stories of millions of Syrian refugees. These stories are relevant to us as human beings, and counter the hostility directed at Syrian and Iraqi refugees within our political discourse.

Post-show talkbacks of *Oh My Sweet Land* will include Co-Founder and CEO of the Karam Foundation [Lina Sergie Attar](#) (top left), actor [Amy J. Carle](#) (top right), director [Anna C. Bahow](#) (bottom left), and Artistic Director [Jamil Khoury](#) (bottom right), all of whom are Syrian Americans.



Our neighborhood partners provide generous support to Silk Road Rising throughout the year. Please help us show our appreciation by patronizing these outstanding businesses.



Let's Stay Connected:



You are receiving this email because you are a Silk Road Rising supporter.

[Unsubscribe](#) | [Update your profile](#) | [Forward to a friend](#)

Copyright © 2016 All rights reserved.

Silk Road Rising 150 N Michigan Ave Ste 1970 Chicago, IL 60601 USA